



**SOUTH AFRICAN  
SAILING**

**SAILING INSTRUCTIONS**

## **2023 Stadt 23 Western Cape Regional Championship**

**Dates:** 27 December 2023 to 30 December 2023

**Venue:** Theewater Sports Club

**Organising Authority:** Stadt 23 Class Association in conjunction with the Theewater Sports Club (TSC) with the consent of SA Sailing.

# **SAILING INSTRUCTIONS**

## **1 COMMUNICATIONS WITH COMPETITORS**

- 1.1 Notices to competitors will be posted on the Official Notice Board in the NOR.
- 1.2 The race office is located at the TSC Bridge Hut.
- 1.3 While racing, except in an emergency, a boat shall not make voice or data transmissions and shall not receive voice or data communication that is not available to all boats.

## **2 CHANGES TO SAILING INSTRUCTIONS**

Any change to the sailing instructions will be posted no later than 90 minutes before the first start on the day it will take effect, except that any change to the schedule of races will be posted by 19h00 on the day before it will take effect.

## **3 CODE OF CONDUCT**

Competitors and support persons shall comply with reasonable requests from race officials.

## **4 SIGNALS MADE ASHORE**

- 4.1 Signals made ashore will be displayed at the TSC Bridge Hut.
- 4.2 When flag AP is displayed ashore, "1 minute" is replaced with "not less than 30 minutes" in Race Signals AP.

## **5 CLASS FLAGS**

The Class flag will be a red background with yellow K.

## **6 RACING AREA**

The waterskloof Dam in vicinity of the committee boat at TSC.

## **7 COURSES**

- 7.1 The diagram in SI Addendum 1 shows the course, including the approximate angles between legs, the order in which marks are to be passed, and the side on which each mark is to be left.
- 7.2 The Race Officer may run 2 Lap or 3 Lap races. A notice board will be placed on the transom of the committee boat to show the number of laps to sail.

## **8 MARKS**

A description of all marks will be posted before close of registration.

## **9 THE START**

- 9.1 The starting line will be between the staff displaying an orange flag on the signal vessel at the starboard end and the course side of the port-end start / finish mark.
- 9.2 To alert boats that a race or sequence of races will begin soon, the orange starting line flag will be displayed with one sound at least five minutes before a warning signal is made.
- 9.3 Not Used.
- 9.4 A boat that does not start within 4 minutes after her starting signal will be scored Did Not Start without a hearing. This changes RRS 35, A4 and A5.1.

## **10 CHANGE OF THE NEXT LEG OF THE COURSE**

To change the next leg of the course, the race committee will lay a new mark (or move the finishing line) and remove the original mark as soon as practicable. When in a subsequent change a new mark is replaced, it will be replaced by an original mark.

## **11 THE FINISH**

The finishing line will be between a staff displaying a blue flag on the race committee vessel at the starboard end and the course side of the port-end start / finish mark.

## **12 SHORTENING COURSE**

In addition to the provisions of RRS 32, the race committee may also signal a shortened course by displaying flag F with repeated sounds. On this signal boats shall round mark 2 as required to sail the course, and thereafter proceed directly to the finishing line. This signal shall be made before the first boat reaches mark 2 and shall continue to be made until all boats still racing have passed these marks. This changes RRS 32.

## **13 NOT USED**

## **14 TIME LIMITS**

Boats failing to finish within 15 minutes after the first boat sails the course and finishes, and not subsequently retiring, being penalised or given redress, will be scored Time Limit Expired (TLE) without a hearing. A boat scored TLE shall be scored points for the finishing place one more than the points scored by the last boat that finished within this time limit. This changes RRS 35 and A4.

## **15 HEARING REQUESTS**

15.1 The protest time limit is 60 minutes after the last boat finishes the last race of the day or the race committee signals no more racing today, whichever is the later. The time will be posted on the official notice board.

15.2 However, if racing is postponed under Race Signal AP over H, then the protest time limit for races completed so far that day is 60 minutes after the last boat finishes the last race completed, or the race committee signalled AP over H, whichever was the later.

15.3 Hearing request forms are available from the race office.

15.4 Notices will be posted no later than 30 minutes after the protest time limit to inform competitors of hearings in which they are parties or named as witnesses. Hearings will be held remotely as instructed by the race office, beginning at the time posted.

## **16 SCORING**

16.1 4 races are required to be completed to constitute a series.

16.2 (a) When fewer than 5 races have been completed, a boat's series score will be the total of her race scores.

(b) When from 5 to 9 races have been completed, a boat's series score will be the total her race scores excluding her worst score.

(c) When from 10 to 14 races have been completed, a boat's series score will be the total of her race scores excluding her two worst scores.

(d) When from 15 to 19 races have been completed, a boat's series score will be the total of her race scores excluding her three worst scores.

(e) When 20 races have been completed, a boat's series score will be the total of her races scores excluding her four worst scores.

## **17 SAFETY REGULATIONS**

17.1 Not Used.

17.2 A boat that retires from a race shall notify the race committee at the first reasonable opportunity.

## **18 REPLACEMENT OF CREW OR EQUIPMENT**

18.1 Substitution of competitors is not allowed without prior written approval of the race committee.

18.2 Substitution of damaged or lost equipment will not be allowed unless approved by the race committee. Requests for substitution shall be made to the committee at the first reasonable opportunity, which may be after the race.

## **19 EQUIPMENT AND MEASUREMENT CHECKS**

19.1 A boat or equipment may be inspected at any time for compliance with the class rules, notice of race or sailing instructions.

## **20 SUPPORT PERSON VESSEL**

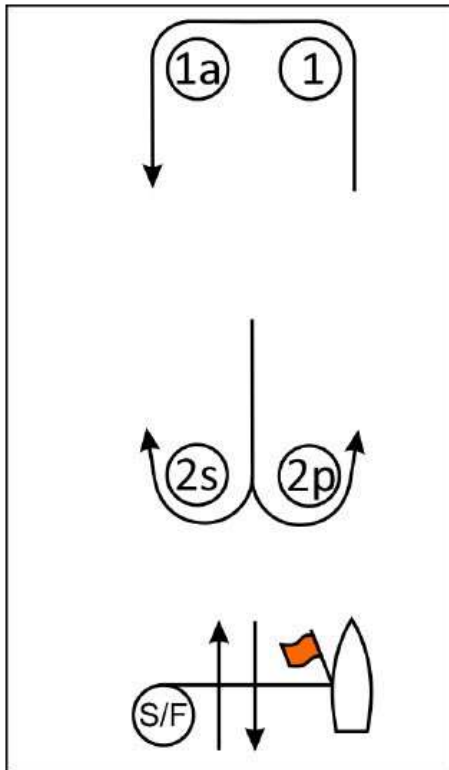
Support person vessels shall stay outside of the course (as shown on the course diagram) and at least 50m from boats racing.

## **21 TRASH DISPOSAL**

Trash may be placed aboard official or support person vessels.

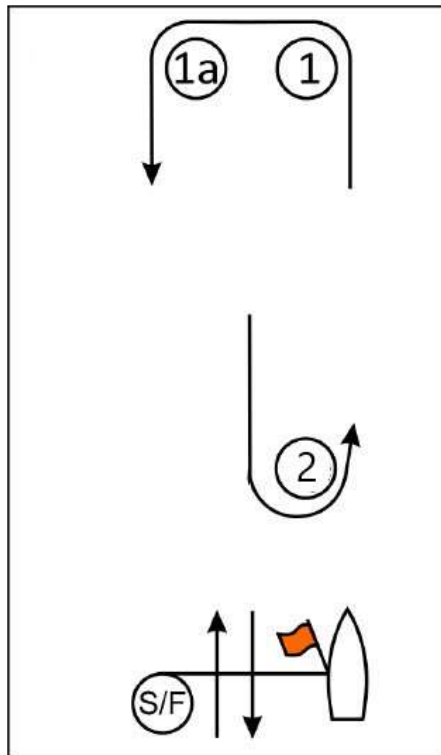
# Addendum 1

## Course 1: Windward Leeward with Gate



| Course – Windward/Leeward with Offset Mark, Leeward Finish |  |
|--|--|
| Signal   | Mark Rounding Order  |
| LA2  | Start – 1 – 1a – 2s/2p – 1 – 1a – Finish                                   |
| LA3  | Start – 1 – 1a – 2s/2p – 1 – 1a – 2s/2p – 1 – 1a – Finish                  |
| LA4  | Start – 1 – 1a – 2s/2p – 1 – 1a – 2s/2p – 1 – 1a – 2s/2p – 1 – 1a – Finish |

## Course 2: Windward Leeward without gate



| Course – Windward/Leeward with Offset Mark, Leeward Finish |  |
|--|--|
| Signal   | Mark Rounding Order  |
| LA2  | Start – 1 – 1a – 2s/2p – 1 – 1a – Finish                                   |
| LA3  | Start – 1 – 1a – 2s/2p – 1 – 1a – 2s/2p – 1 – 1a – Finish                  |
| LA4  | Start – 1 – 1a – 2s/2p – 1 – 1a – 2s/2p – 1 – 1a – 2s/2p – 1 – 1a – Finish |